

Base Anatomico Clinique de l'Adénocarcinome Pancréatique

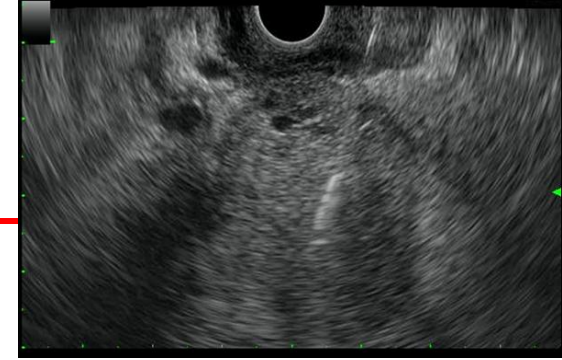


Coordinator
Dr BOURNET Barbara

Project Manager
Cindy Canivet

Service de Gastroentérologie et Nutrition
CHU de Toulouse

Aims of BACAP

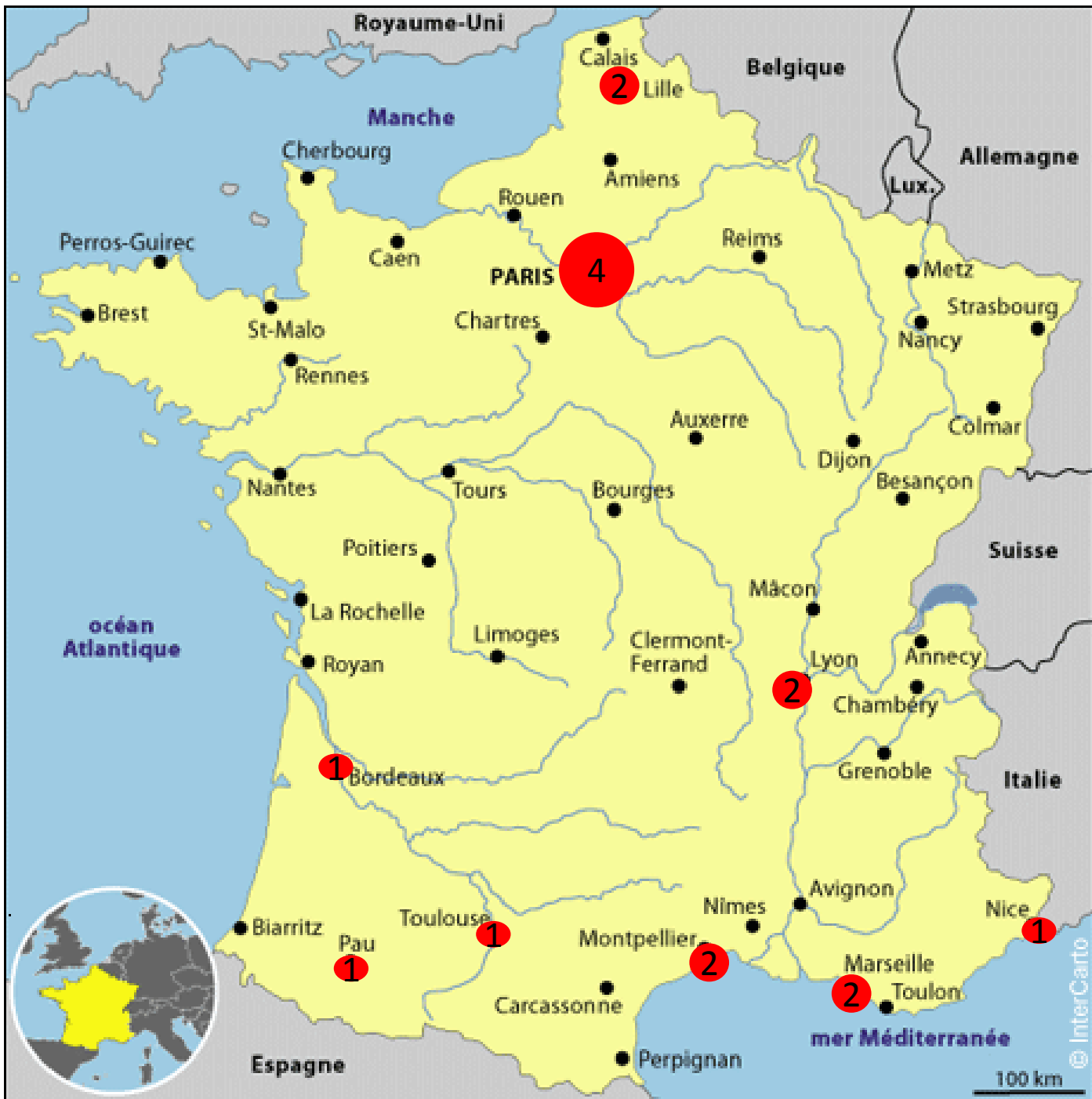


Incidence rate in France: 8 to 10/100 000 per year

- To build a clinical and biological database on the best quality standards, around a network of clinicians, surgeons, pathologists, epidemiologists.
- To make this database available to the scientific community to explore carcinogenesis, develop detection and diagnostic biomarkers and new therapeutic targets.

Partners

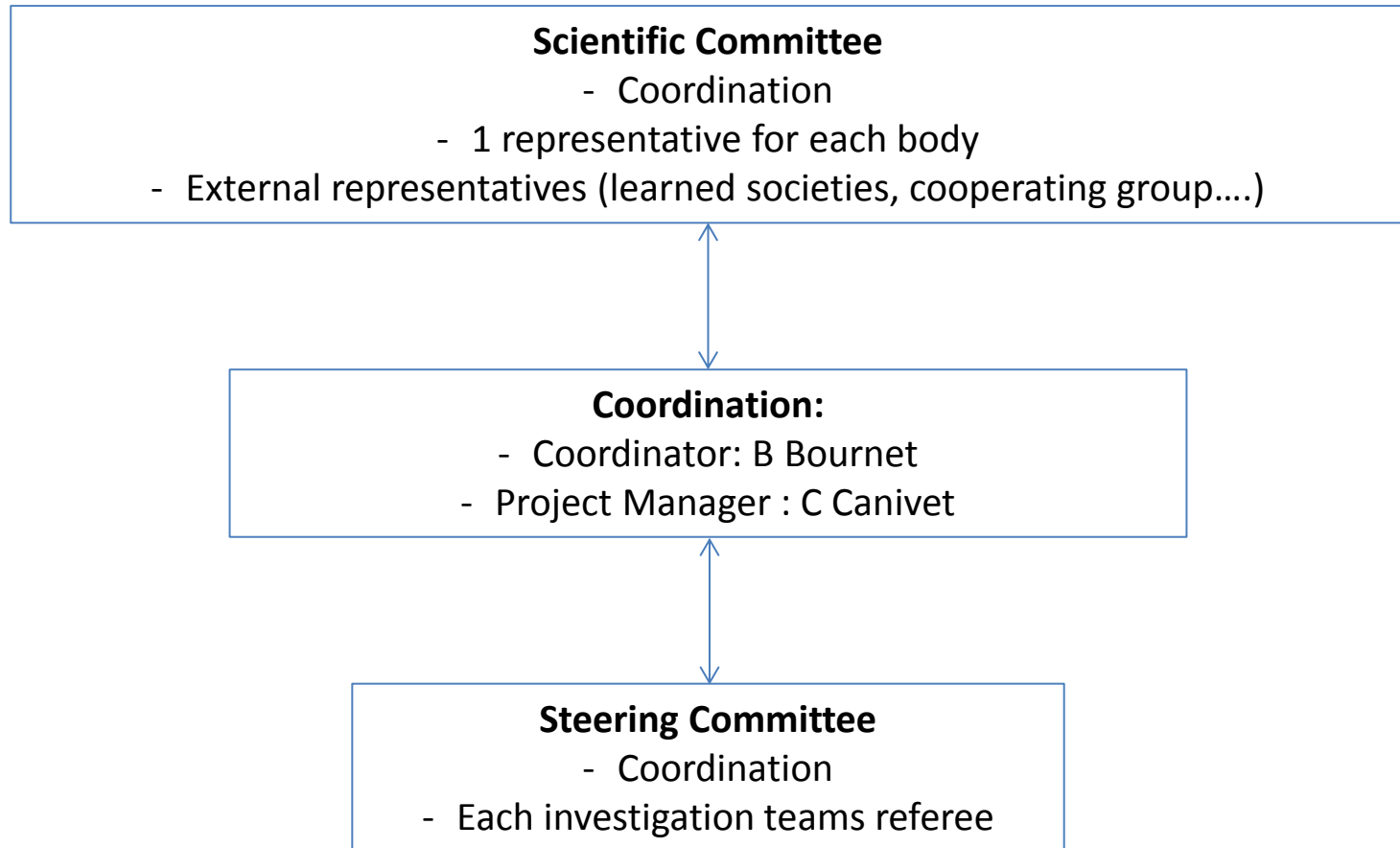
- BACAP is a multidisciplinary network
- 16 clinical centers for the patients recruitment with at least 3 clinical specialties.
- 2 epidemiological teams
- 6 scientific teams
- 1 data center



Regulatory

- BACAP is not a biomedical research project
- Necessity to obtain :
 - CCTIRS (**C**omité **C**onsultatif sur le **T**raitement de l'Information de **R**echerche dans le domaine de la **S**anté) authorization
 - CNIL (**C**ommission **N**ationale **I**nformatique et **L**iberté) authorization
 - Ethic comitee approval
 - A collection declaration to the ministry of research and health
- Redaction of a consortium contract for the network

Governance



Methodology

- This is a national monothematic, multicentric and prospective project
- **Inclusion criteria:** Patients with adenocarcinoma specifically located in the pancreas regardless the stage considered (resectable, locally advanced, unresectable or metastatic) and virgin of any chemotherapy treatment for the pancreas
- **Exclusion criteria:** Patients with previous chemotherapy treatment for the pancreas

Collected data

From patient questionnaire:

- **Demographic** : Year of birth, gender, school level, job
- **Risk factors linked to PDAC** : Alcohol and tobacco consumption, MTEV risks, family cancer
- **Clinic** : Weight evolution, height, WHO performance status, medical co-morbidities, past history of other cancer, date of first symptoms/description, diagnostic data, tumor information

From medical exam:

- **Imagery** : TDM, Echo-endoscopy, MRI, PET-SCAN, for each exam details about tumor localization, expansion, ganglia, metastasis are collected (at the diagnosis and follow-up)
- **Biologic** : full biologic analysis, CA19.9
- **Therapeutic** : medical, surgical, radiotherapeutic, palliative strategies with evaluation of response and tolerance of the treatment
- **Survival data**
- **Date of death**

Biobank

- **Tumor/Pathology** :Pre-therapeutic biopsies, tumor banking, pTNM stage, Histology, DNA and RNA from tumor cells.
- **Biological samples** : whole blood , serum , plasma and saliva
- **Blood samples** are collected at the diagnostic before any treatment. All patients included in BACAP have a blood sample

Biological collection

Biological sample	Origin of the sample	Quantity of the sample/ concentration available	Number of aliquot	Preservation or storage conditions
At Baseline (date of the first sampling): 15th May2014				
<i>Tissues biopsies</i>	<i>Pancreatic tissue or metastasis</i>		<i>[1-4]</i>	<i>Paraffin or liquid nitrogen</i>
<i>Plasma</i>	<i>Blood</i>	<i>500µl</i>	<i>[4-6]</i>	<i>-80°C</i>
<i>Serum</i>	<i>Blood</i>	<i>500µl</i>	<i>[4-6]</i>	<i>-80°C</i>
<i>Total whole Blood</i>	<i>Blood</i>	<i>1ml</i>	<i>[4-6]</i>	<i>-80°C</i>
<i>saliva</i>	<i>Saliva</i>	<i>1ml</i>	<i>1</i>	<i>-80°C</i>
<i>DNA</i>	<i>Pancreas</i>	<i>[40-2000ng]</i>	<i>1-2</i>	<i>-80°C</i>
<i>RNA</i>	<i>Pancreas</i>	<i>[40-2000ng]</i>	<i>1-2</i>	<i>-80°C</i>

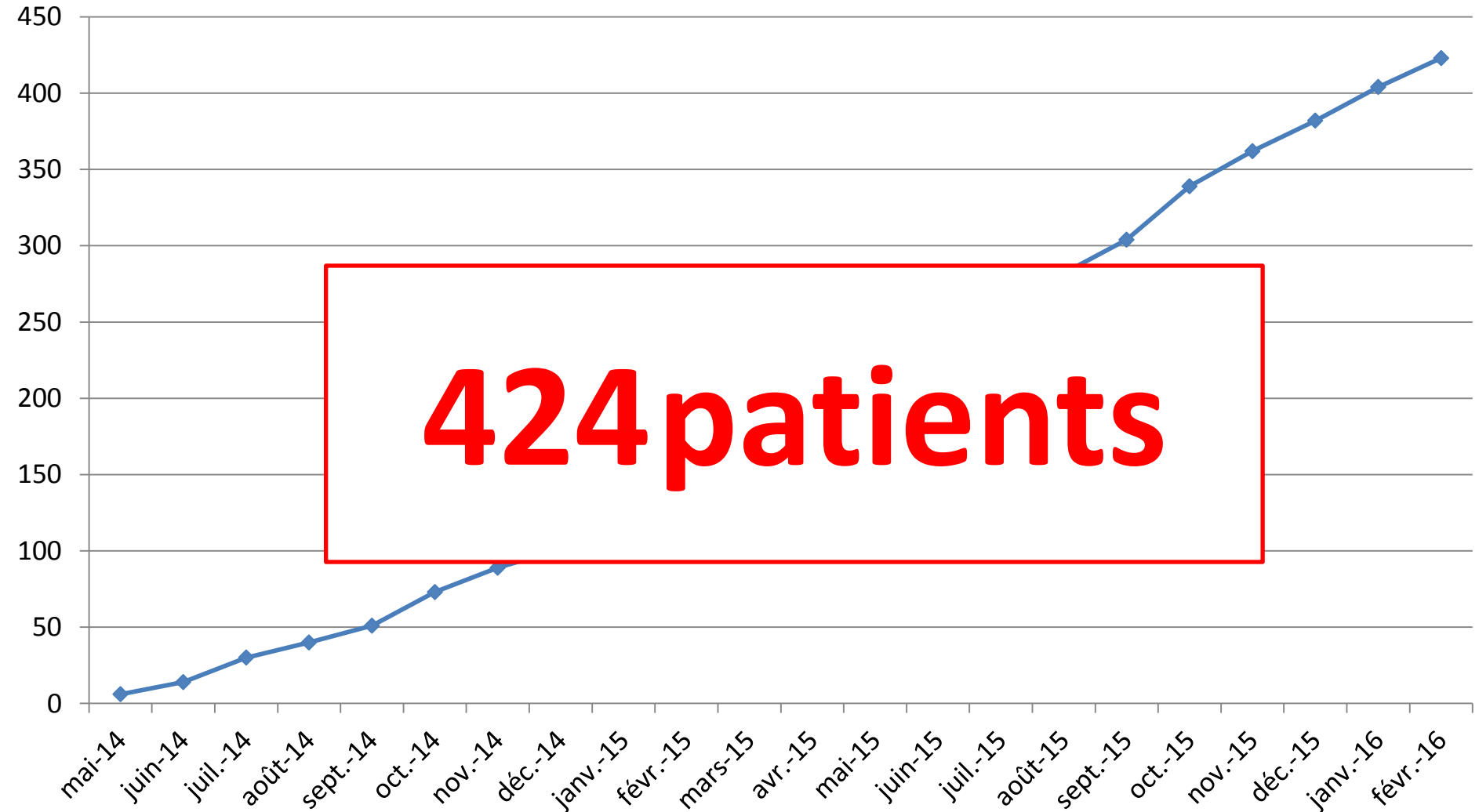
Biological collection

Biological sample	Origin of the sample	Quantity of the sample/ concentration available	Number of aliquot	Preservation or storage conditions
At Baseline (date of the first sampling): 15th May2014				
<i>Tissues biopsies</i>	<i>Pancreatic tissue or metastasis</i>		<i>[1-4]</i>	<i>Paraffin or liquid nitrogen</i>
<i>Plasma</i>				
<i>Serum</i>				
<i>Total whole Blood</i>	<i>Blood</i>	<i>1ml</i>	<i>[4-6]</i>	<i>-80 °C</i>
<i>saliva</i>	<i>Saliva</i>	<i>1ml</i>	<i>1</i>	<i>-80°C</i>
<i>DNA</i>	<i>Pancreas</i>	<i>[40-2000ng]</i>	<i>1-2</i>	<i>-80°C</i>
<i>RNA</i>	<i>Pancreas</i>	<i>[40-2000ng]</i>	<i>1-2</i>	<i>-80°C</i>

8500 samples

Recruitment

Number of patients



424 patients

Biological samples and data modalities access

- To access biological samples and/or data, the research team need to fill out a specific research project proposal, available on the BACAP website: <http://www.chu-toulouse.fr/-projet-bacap->
- Biological samples and clinical data are transferred after the scientific and steering committee decision.
- A partnership contract is signed with each scientific team using samples and/or data of BACAP.

Thank You for your attention !